

BRADLEYS BOTH PARISH COUNCIL

Email: bradleysbothparishcouncil@gmail.com

July 2025

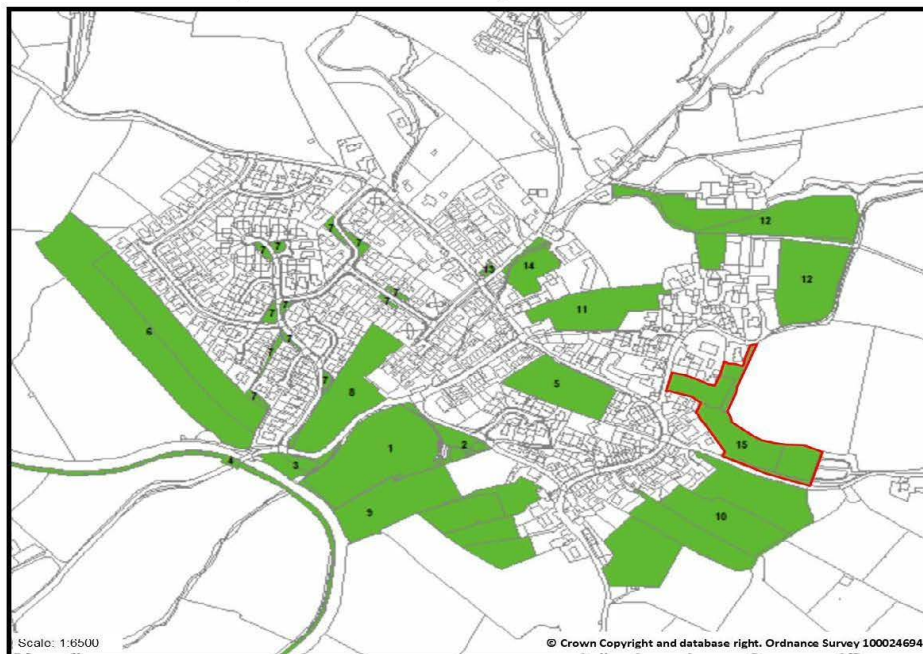
Dear Consultee

Notification of a formal public consultation on a modification to the Bradleys Both Neighbourhood Development Plan under Regulation 14 Neighbourhood Planning (General) Regulations 2012

Many of you will be aware that a Neighbourhood Development Plan (NDP) for Bradleys Both was adopted/made in 2023. It followed an earlier public consultation and, on adoption, it became a legal document forming part of the statutory development plan for the area, used to determine planning applications submitted in Bradleys Both until 2032.

The Parish Council has kept the NDP under review and has considered the possibility of modifying it by including an additional Local Green Space (LGS) to the east of College Road and extending up to and including the recent extension to the burial ground, Sweet Croft. Sweet Croft is managed by the Bradley Environmental Group and is the only part of the proposed LGS that is open to the public. The location of the proposed LGS is shown in the plan below.

Local Green Space Policies Map



KEY

ENV1: Local Green Space *

* LGS 4 Canal Towpath designation relates to the entire length of canal towpath in the Neighbourhood Area.

The modification of the NDP to include this additional LGS will help to preserve its current appearance bearing in mind:-

- Views from Sweet Croft over the village and the Aire valley beyond;
- The significance of Sweet Croft as part of the burial ground and its importance as an area for private reflection by members of our community;
- The significance of this area as a manifestation of the landscape history of Lower Bradley demonstrating the green spaces which remain threaded through the village following its growth as in the late eighteenth and early nineteenth centuries;
- The proximity of the site to a grade II listed building, College House;
- The recognition of the area fronting on College Road as making a strong contribution to the character and appearance of the village by an erratum to the Low Bradley Conservation Area Appraisal which currently awaits formal adoption.

The proposed modified NDP can be viewed and downloaded from the Bradley Village website at <https://bradleyvillage.org/> and printed copies can be viewed at:-

- The Village Hall on Fridays from 09.00 - 20.00 (apart from Friday 15th August), and
- The Village Store during normal opening hours.

Printed copies summarising the proposed modification can be provided on request. Further details of the modification, the procedure applicable to it and the thinking behind that procedure are set out in the attached note.

The consultation period runs for six weeks from noon on Friday 1st August 2025 to 5.00pm on Friday 12th September 2025.

The Parish Council would welcome your comments on the proposed modification. It will be helpful if you can make your comments by email to our clerk, Mags Smith, at **bradleysbothparishcouncil@gmail.com** and comments can also be submitted to the Village Store, 5-6 Rose Terrace, Bradley BD20 9DP by post or hand and marked 'NDP modification'.

Following the public consultation process, the proposed modified plan (and any amendments to it following the consultation) will be submitted to North Yorkshire Council with supporting documentation. This will include a basic conditions statement, a consultation statement setting out who has been consulted, how the consultation has been undertaken and how the representations received have informed the proposed modification of the NDP, and a modified statement setting out which type of modification the Parish Council considers it to be i.e., a material or substantial as to change the nature of the neighbourhood plan, with reasons.

The proposed modified plan will then be examined by an independent examiner who will decide whether the proposed modifications change the nature of the plan or not. If the decision is that the proposed modifications would change the nature of the plan then a referendum would be required. If the decision is that it would not change the nature of the plan then North Yorkshire Council must make or adopt the plan.

Yours sincerely

Bradleys Both Parish Council